



# Gemba Solutions Plant Efficiency

---

**Improving workplace processes  
through technology**





# Plant Efficiency

Improving Workplace Processes through Technology

## The software: what does it do?

The PLANT EFFICIENCY module monitors and reports on a plant's operating efficiency using the OEE (Overall Equipment Effectiveness) metric, which focuses on the three key elements of production affecting plant efficiency; **availability**, **performance** and **quality**.

- ◆ The **availability** element reports on how well a plant is being utilised, breaking down its time into planned downtime, unplanned downtime and unallocated time, pointing the user to production problems, bottlenecks and other areas from which lost time can be clawed back
- ◆ The **performance** element reports on how well a plant is performing against a defined standard (e.g. parts per minute). With this information the user can quickly pick up on slow and fast running and clearly see what, if any, effect speed changes are having on output quality and equipment reliability
- ◆ The **quality** element reports on the ratio of good parts to bad, analysing and reporting on rejects by 'reason'. In addition to determining where your quality issues lie, this data is often used to confirm compliance to customer demands, including required tolerances and average weights and measures

## How does it do it?

The PLANT EFFICIENCY module relies on high quality information which it gathers from a wide variety of sources across the plant...

- ◆ It automatically gathers status and throughput information from the shop-floor plant and equipment (i.e. Machine status, good and bad part counts, stoppage reasons, etc.)
- ◆ It manually gathers other information relating to the manufacturing process from the shop-floor team (e.g. job detail, stoppage reasons, etc.)
- ◆ It communicates with the ERP and other site systems and sub-systems, pulling in production schedules, product standards and other information required to determine manufacturing efficiency

Once gathered the data is merged, analysed and presented back to the user as:

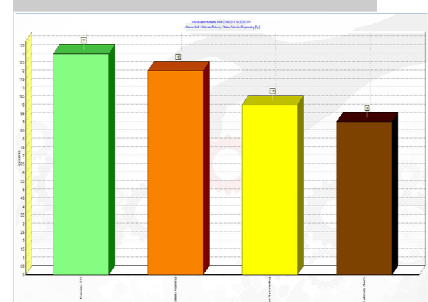
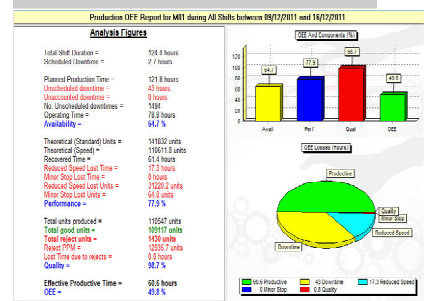
- ◆ Out-of-the-box displays and reports which provide comprehensive manufacturing intelligence of plant and equipment status and current and historical performance.
- ◆ User-definable overview displays which provide the same level of information but in a form customised to meet the precise needs of the user and of those viewing it.
- ◆ A dynamic chart builder provides a raft of reports, each of which can be populated with user-selected data, enabling a comprehensive analysis of the manufacturing process to be performed.

## What will it do for me?

Suited to all types of process, whether automatic, semi-automatic or manual, our product will act as a catalyst to your improvement programme, helping you to reduce your downtime and stabilise your performance without compromising your product quality.

Using accurate data to identify and target production improvements

| Machine ID | Availability | Performance | Quality | OEE  |
|------------|--------------|-------------|---------|------|
| Machine 01 | 64.1         | 78.3        | 98.7    | 49.6 |
| Machine 02 | 0.3          | 0.0         | 0.0     | 0.0  |
| Machine 03 | 66.0         | 78.0        | 98.8    | 50.8 |
| Machine 04 | 62.8         | 76.5        | 98.7    | 47.5 |
| Machine 05 | 63.8         | 76.6        | 99.0    | 48.4 |
| Machine 06 | 63.5         | 77.8        | 98.7    | 48.8 |





---

**Gemba Solutions Ltd**

Eliot Park Innovation Centre, Barling Way

Nuneaton

CV10 7RH

United Kingdom

+44 (0) 2476 796615

[sales@gembasolutions.com](mailto:sales@gembasolutions.com)

[www.gembasolutions.com](http://www.gembasolutions.com)

Gemba Solutions 2011 (Rev 1)